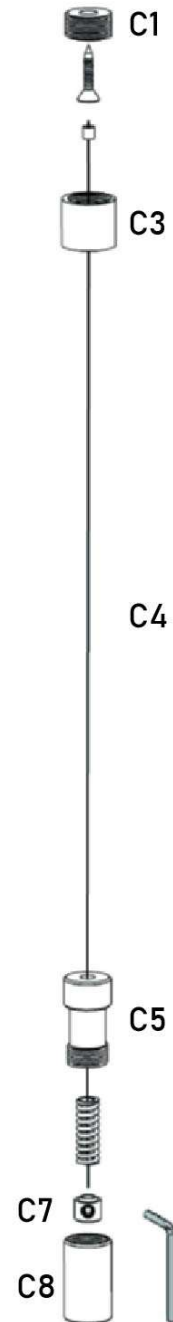




## Float Wine Racking Installation Instructions

- 1) **Ensure the installation location has strong, secure floor and ceiling mounting material.** The floor and ceiling must hold both the tension of the cables and the weight of the wine bottles. (A drywall ceiling will not be enough. **A minimum of 3/4" thick plywood in the ceiling is required.** Each full bottle of wine weighs 3 to 3 1/2 pounds.)
- 2) **Attach (2) two clips to each side of each glass plate.** Each glass plate requires (4) four clips. Each clip should be positioned about 1" from the end of the plate. Ensure all clips are installed on each plate in the same position so that plates are in line when you attach them to the cables. Allen screws are provided. **(IMPORTANT: do not over-tighten the Allen screw. You may crack the glass)**
- 3) **Measure and note the distance between the cable slots in the clips lengthways and across the plates.** These measurements are critical to ensure proper alignment of the cables.
- 4) **Attach four (4) cables to your ceiling (or top of your enclosure) using the measurements of the cable slots.** Ensure they perfectly match the slots on your plates. Also ensure the alignment of the cables forms a perfect square. To attach the cables to the ceiling affix C1 to the ceiling and then C3 to C1.
- 5) **Attach four (4) cables to your floor (or bottom of your wine enclosure) using the measurements of the cable slots.** Ensure they perfectly match the slots on your plates and are perfectly perpendicular. Use a level or plum bob to align the cables. Also ensure the alignment of the cables forms a perfect square. To affix the cables to the floor or bottom of the enclosure:
  - a. Affix the C8 to the floor or bottom anchoring point
  - b. Using the Allen key provided, unscrew and raise part C7 on the cable. Cut off the excess cable so that it is 3/4" above the floor. \*Do not detach the C7 from the cable, move it up before cutting it to the length you need.
  - c. Part C7 should be approximately 1/4" up from the bottom end of the cable.





- d. Screw C5 into C8, this will compress the spring and assure proper tension on the cable. If the cable is not tight enough, slightly raise part C7 on cable and repeat. Should a larger adjustment need to be made, the excess cable should be trimmed off as instructed in Step # 5.
  - e. Once proper tension has been achieved, securely tighten all parts but do not completely screw C5 into C8 leaving about 1/4" unscrewed. However the cable must be taut at this point. This will give room for the cable to be tightened once cable has stretched into place. Be careful not to over-tighten.
- 6) **Measure the distance from floor to ceiling and determine the placement of your plates on the cables.** Determine the placement of the lowest plate.
  - 7) **Slide the cables into the slots on the first plate.** Start an Allen screw into the end of each slot in each of the (4) four clips. Tighten the Allen screw onto the cable on one corner of the plate at the height determined. Use a level to determine the exact horizontal height of each corner of the plate and tighten the Allen screw on each as it is leveled.
  - 8) **Measure the distance to the next plate and repeat the placement instructions.** Repeat the plate placement instructions for each plate. Ensure the distance between the plates is equal for all plates.

*Note: Following these instructions is very important for a successful installation. Insufficient backing or improper installation can result in cables pulling loose. Overtightening of set screws against glass can cause glass to crack. In the unfortunate event you have cracked glass cradles and require replacements, please contact us to order replacement glass cradles.*