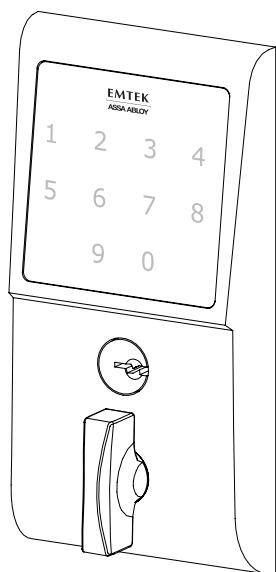


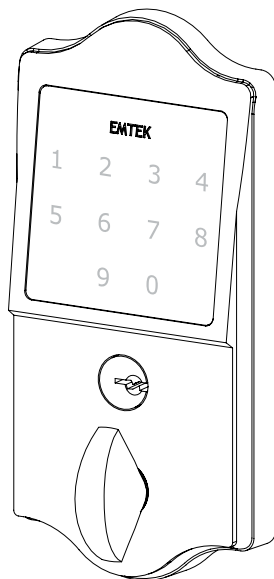
## **Installation & Programming Guide**

### **EMTouch™ & EMTouch™ Classic Style**

### **Electronic Deadbolt Locksets**

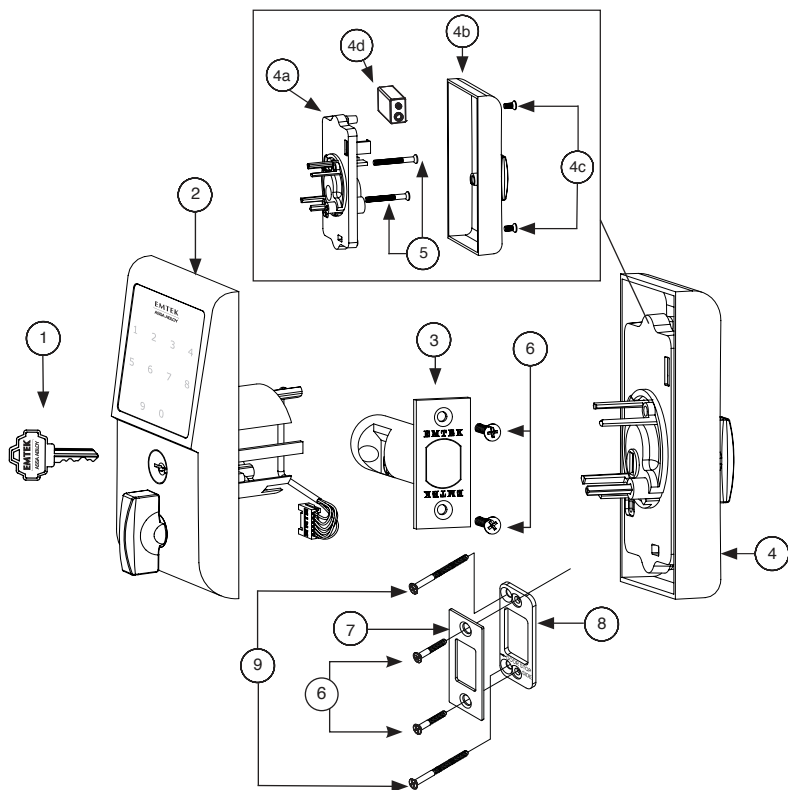


EMTouch™



EMTouch™ Classic Style

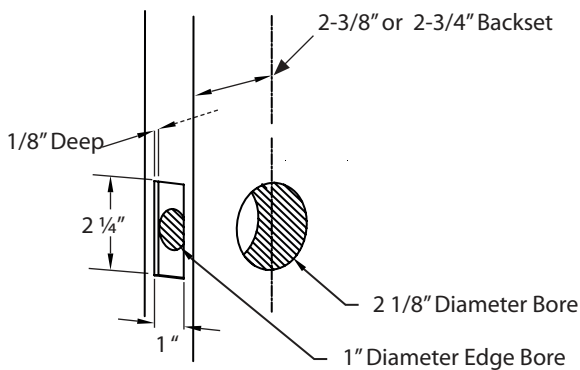
## What's in the Box



| ITEM NO. | DESCRIPTION                                      | QTY. |
|----------|--|------|
| 1        | Key  | 2    |
| 2        | Outside Trim Plate Assembly                      | 1    |
| 3        | Deadbolt Latch Assembly 2 3/8" or 2 1/4" Backset | 1    |
| 4        | Inside Trim Plate Assembly                       | 1    |
| 4a       | Inside Chassis                                   | 1    |
| 4b       | Inside Trim Plate                                | 1    |
| 4c       | #8-32 x 3/8" Flat Head Machine Screw             | 2    |
| 4d       | 9V Alkaline Battery                              | 1    |
| 5        | #8-32 x 1 1/2" Flat Head Machine Screw           | 2    |
| 6        | #8 x 1/4" Wood Screw                             | 4    |
| 7        | Strike Plate                                     | 1    |
| 8        | Security Plate                                   | 1    |
| 9        | #10 x 3" Wood Screw                              | 2    |

## Preparation

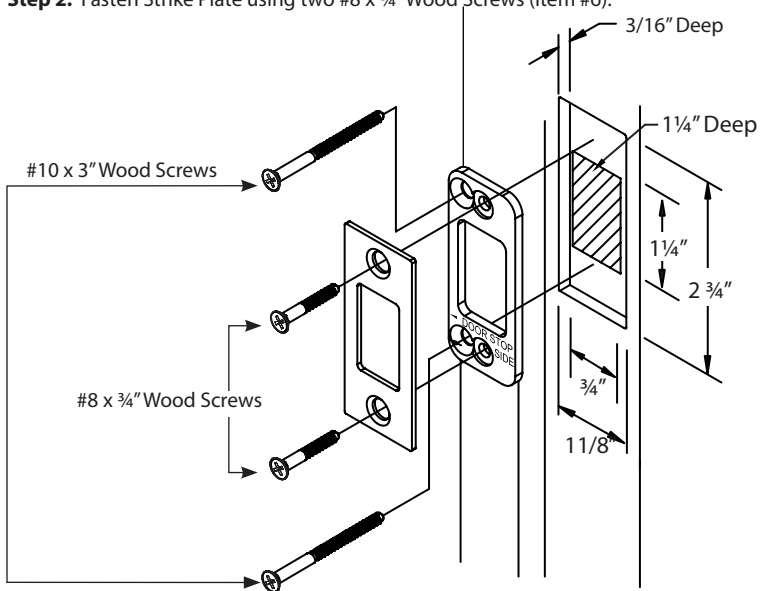
### 1. Door Prep



### 2. Door Jamb Prep

**Step 1:** Fasten Security Plate using two #10 x 3" Wood Screws (item #9).

**Step 2:** Fasten Strike Plate using two #8 x 3/4" Wood Screws (item #6).



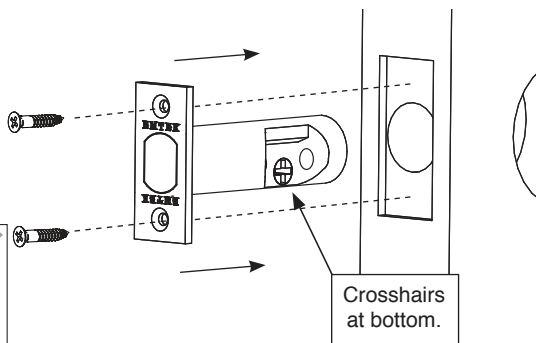
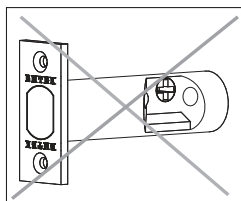
## How to Install

### 1. Install Latch

Fasten Latch using two #8 x ¾" Wood Screws (item #6).



**THE LATCH ASSEMBLY MUST BE ORIENTED AS SHOWN AND THE BOLT MUST BE IN THE RETRACTED POSITION FOR INSTALLATION.**

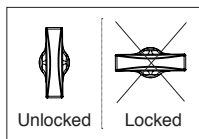


### 2. Remove Screws from Inside Trim Plate

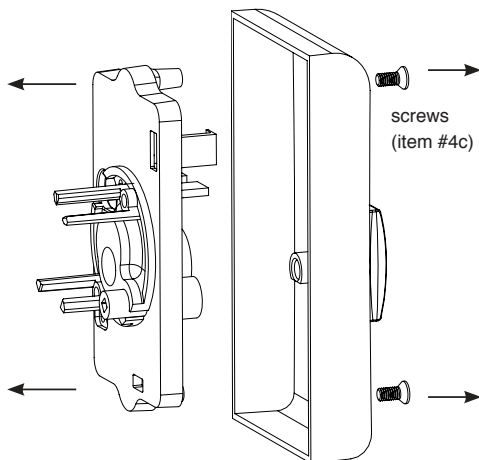
Use a Phillips head screwdriver to remove screws (item #4c) shown below and detach Inside Trim Plate from the Inside Chassis.



**REMOVE INSIDE CHASSIS FROM TRIM PLATE BEFORE INSTALLING THE OUTSIDE TRIM. THUMBTURN MUST BE IN UNLOCKED POSITION.**



Scan this QR code for details.



### 3. Install Outside Trim Plate Assembly

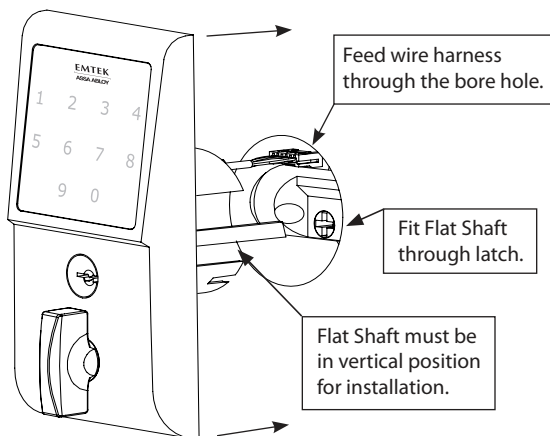
Position the Outside Trim Plate Assembly through the bore hole.



**ONCE POSITIONED,  
OUTSIDE TRIM PLATE  
ASSEMBLY REQUIRES  
SUPPORT.**



Scan  
this QR  
code for  
details.



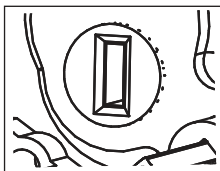
### 4. Install Inside Chassis

**Step 1:** Confirm the position of Flat Shaft.

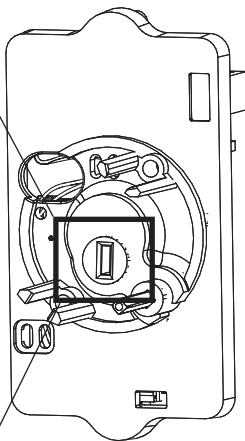
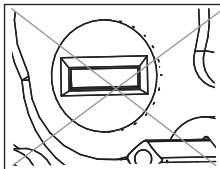


**HOLE FOR FLAT  
SHAFT MUST BE IN  
VERTICAL POSITION  
FOR INSTALLATION.**

✓ Correct for Installation.

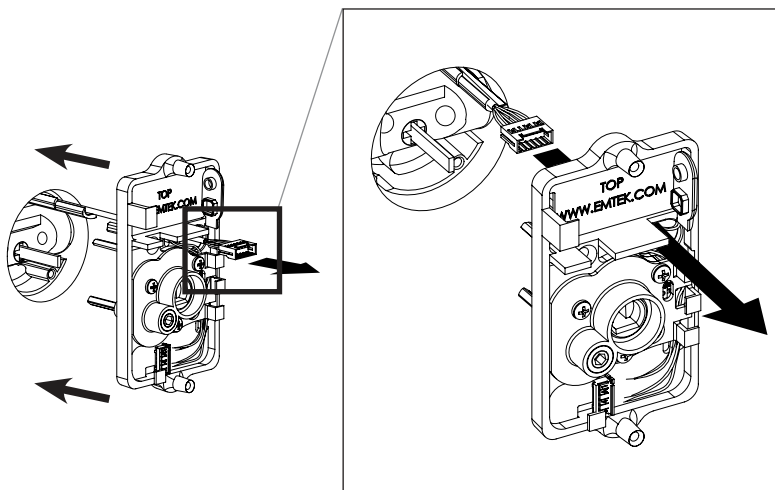


✗ Incorrect for Installation.



## 4. Install Inside Chassis

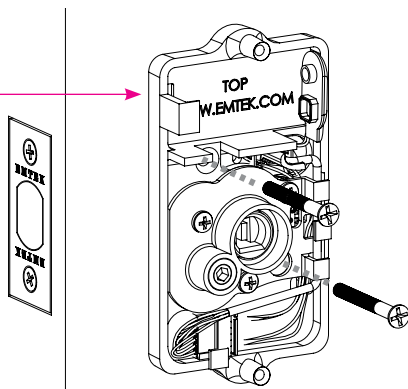
**Step 2:** Feed the Wire Harness through Inside Chassis.



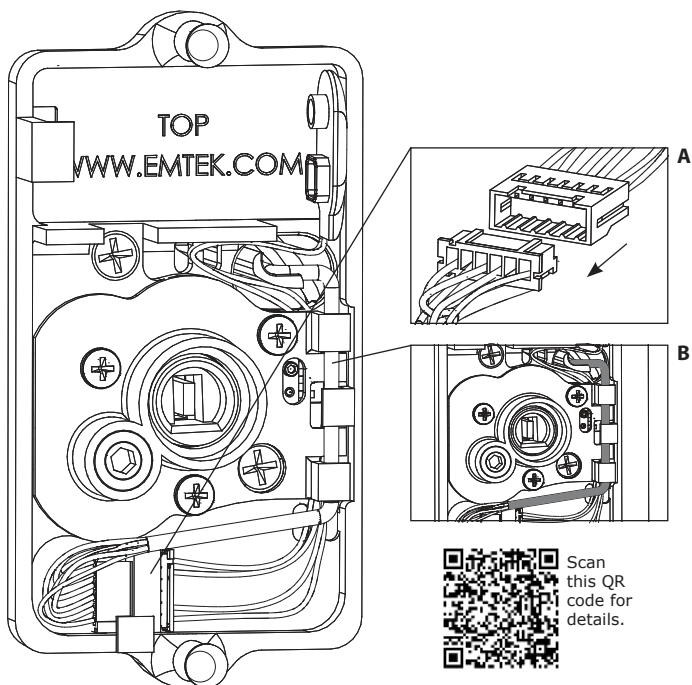
**Step 3:** Fasten Inside Chassis using two #8-32 x 1½" Flat Head Machine Screws (item #5).



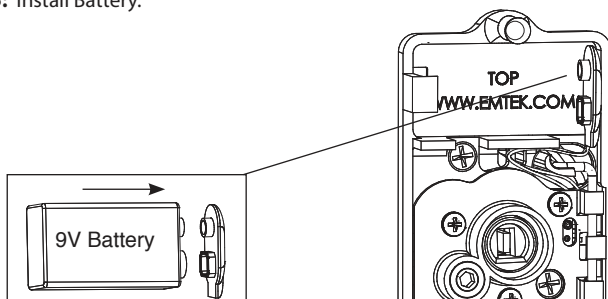
**CHECK ALIGNMENT BEFORE  
FULLY TIGHTENING SCREWS.**



**Step 4:** Connect Wire Harness (A) and tuck Connectors as shown (B).



**Step 5:** Install Battery.



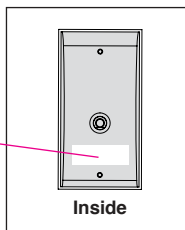
*For optimal performance, always use a good quality battery.*

## 5. Install Inside Trim Plate

Fasten Inside Trim Plate using two #8-32 x 3/8" Flat Head Machine Screws (item #4c).



**USER CODES  
ARE LOCATED  
ON THE INSIDE  
TRIM PLATE &  
ON PAGE 11.**

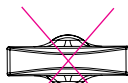


Correct for installation



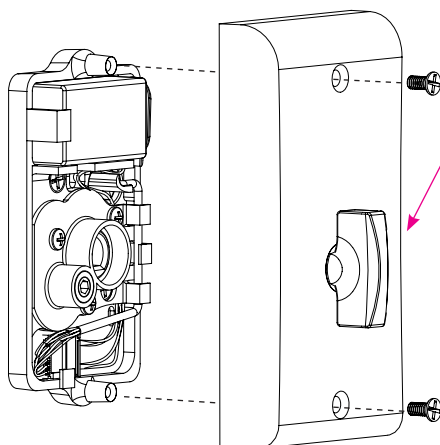
**\*Unlocked**

Incorrect for installation



**Locked**

**\*Unlocked position** is required for installation and removal of the Inside Trim Plate Assembly.



**THUMBTURN MUST BE IN  
UNLOCKED POSITION FOR  
INSTALLATION.**

Screws (item #4c)

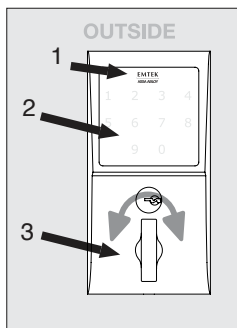


## Your Lock is Ready to Use

Your Emtek lock is shipped with two 4-digit user codes and a 6-digit programming code. These codes are randomly generated at the factory. *(Turn to next page for Programming Instructions.)*

### To Unlock:

1. Press EMTEK key or touch 3 fingers across screen.
2. Enter 4-digit user codes.  
*(See sticker located on the inside trim plate or on page 11).*
3. Rotate Thumbturn.



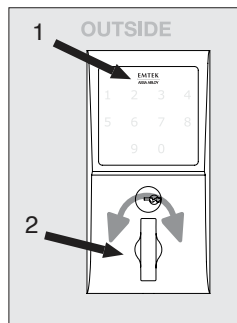
### To Lock:

#### Option 1

1. Press EMTEK key.
2. Rotate Thumbturn.

#### Option 2

1. Touch 3 fingers across screen.
2. Enter 4-digit user codes.  
*(See sticker located on the inside trim plate or on page 11).*
3. Rotate Thumbturn.



## Programming Your Lock

In order to perform each of the following six functions, the lock must first be placed in Programming Mode:

1. Press and hold EMTEK button for 3 seconds
2. **Yellow** LED flashes, then remains solid\*, number keys also illuminate
3. Enter Programming Code
4. **Yellow** LED flashes, then 1 beep
5. **Yellow** LED remains solid (awaiting button press; see following Table)

| IF YOU WISH TO   | PRESS BUTTON | ACTIONS   |   | INDICATORS  |
|--|--------------|---|---|---|
| Change Programming Code<br>(6 digits)                      | 1            | Enter New Programming Code<br>(6 digits)                  | Re-Enter New Programming Code<br>(6 digits) | <ul style="list-style-type: none"> <li>• 1 <b>Green</b> LED flash</li> <li>• 1 beep</li> <li>• 1 <b>Green</b> LED flash</li> <li>• 1 beep</li> <li>• 2 <b>Green</b> LED flashes</li> <li>• 2 beeps</li> </ul> |
| Add User Code<br>(4 digits)<br>(Store up to 20 User Codes) | 2            | Enter New User Code<br>(4 digits)                         | Re-Enter New User Code<br>(4 digits)        | <ul style="list-style-type: none"> <li>• 1 <b>Green</b> LED flash</li> <li>• 1 beep</li> <li>• 1 <b>Green</b> LED flash</li> <li>• 1 beep</li> <li>• 2 <b>Green</b> LED flashes</li> <li>• 2 beeps</li> </ul> |
| Delete User Code   | 3            | Enter User Code to be Deleted                             | Re-Enter User Code to be Deleted            | <ul style="list-style-type: none"> <li>• 1 <b>Green</b> LED flash</li> <li>• 1 beep</li> <li>• 1 <b>Green</b> LED flash</li> <li>• 1 beep</li> <li>• 2 <b>Green</b> LED flashes</li> <li>• 2 beeps</li> </ul> |
| **Enable/Disable All User Codes                            | 4            | Entering '4' disables all Users (enables all if disabled) |   | <ul style="list-style-type: none"> <li>• 2 <b>Green</b> LED flashes</li> <li>• 2 beeps</li> </ul>   |
| Delete All User Codes                                      | 5            | Re-Enter Programming Code                                 |   | <ul style="list-style-type: none"> <li>• 1 <b>Green</b> LED flash</li> <li>• 1 beep</li> <li>• 2 <b>Green</b> LED flashes</li> <li>• 2 beeps</li> </ul>   |
| Turn Beeper On/Off   | 6            | Entering '6' turns OFF (or ON)                            |   | <ul style="list-style-type: none"> <li>• 1 <b>Green</b> LED flash</li> <li>• 1 beep</li> <li>• 2 <b>Green</b> LED flashes</li> <li>• 2 beeps</li> </ul>   |

\*If no input within 20 seconds, **Yellow** LED goes out, **Red** LED flashes and lock exits Programming Mode.

\*\*Also referred to as "vacation mode". This command temporarily disables all user codes (metal key override will still work).

## Keypad Operation - Beeper & LED Indicators

| Function                    | Indicators  |
|-----------------------------|---|
| Valid Code                  | • 1 short beep, EMTEK button flashes <b>Green</b> .       |
| Invalid Code/Access Denied* | • 1 <b>Red</b> LED flash<br>• 2 short beeps               |
| Lock-Out Mode Error         | • 2 short beeps<br>• 1 short beep per second for duration |
| Access Accepted             | • 1 short beep<br>• 1 <b>Green</b> LED flash              |
| Low Battery                 | • 4 <b>Red</b> LED flashes<br>• 4 short beeps             |
| Blackout Battery**          | • 1 long <b>Red</b> LED flash<br>• 4 long beeps           |
| Button Press Accepted       | • 1 <b>Yellow</b> LED flash<br>• 1 Short Beep             |
| Outside Thumb Turn Enabled  | • 2 <b>Green</b> LED flashes                              |

\* If 3 consecutive incorrect codes are entered, the lock emits 4 short beeps and a flashing **Red** EMTEK button. The lock will not accept additional input for 20 seconds (20 beeps). When the next valid code is entered the lock will beep quickly 5 times to alert of the incorrect codes.

\*\* Battery voltage has dropped too low; keypad will be disabled but metal key override will still work.

## Restoring the Lock to Factory Default Setting

This procedure clears the lock of all users and restores the Programming Code and 2 User Codes shipped with the lock.

- Press and hold EMTEK button for 3 seconds.
- Enter "000000"
- After 2 beeps and 2 **Green** LED Flash, remove power (disconnect 9V battery) from Lock.
- After 5 seconds, restore power (reconnect 9V battery)
- Confirm by 2 beeps and 2 **Green** LED Flash.

U.S. patent: **8,141,400**

International patents pending.

Place Sticker Here



Scan this QR for  
installation videos

**EMTEK<sup>®</sup>**  

---

**ASSA ABLOY**

ASSA ABLOY is the global leader in door opening solutions, dedicated to satisfying end-user needs for security, safety and convenience.

Copyright © 2012, Emtek Products, Inc. an ASSA ABLOY Group company. All rights reserved. Reproduction in whole or in part without the express written permission of Emtek Products, Inc. is prohibited.